



IMAGINE WHAT CAN MAKE PEOPLE
LAUGH

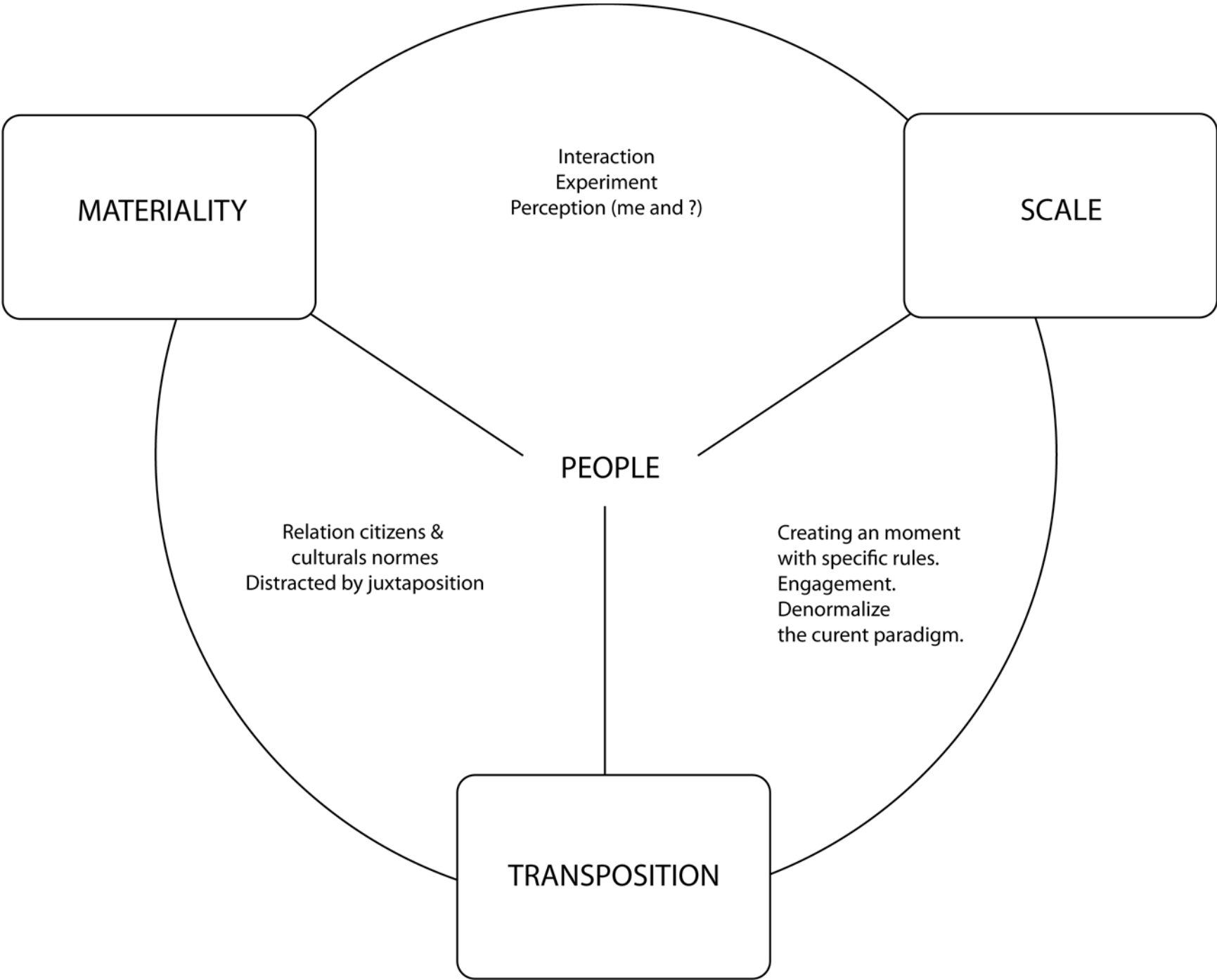
In thinking about how the built fabric has the potential to influence society, and the way that the architecture of cities and its objects plays a role in sustaining and enforcing societal practices and norms, we were collectively interested in experimenting with the relationships that one builds with such objects and the city fabric. Numerous visits to Rosa-Luxemburg have highlighted the fact that public space is often a thoroughfare. Of course this will always form part of the role as public space, but it seems that the space itself does little to engage with the public (apart from through commercial purposes). It appears as a streamlined minimal space with few details or materiality difference to slow down one's journey through space. If the quality of the objects we surround ourself with have the ability to control and mediate our current way of living, then we want to explore or highlight these elements using three research approaches. All three deal with similar concepts of perception, sense of place, context, cultural norms, and power of the object in its relation to self.

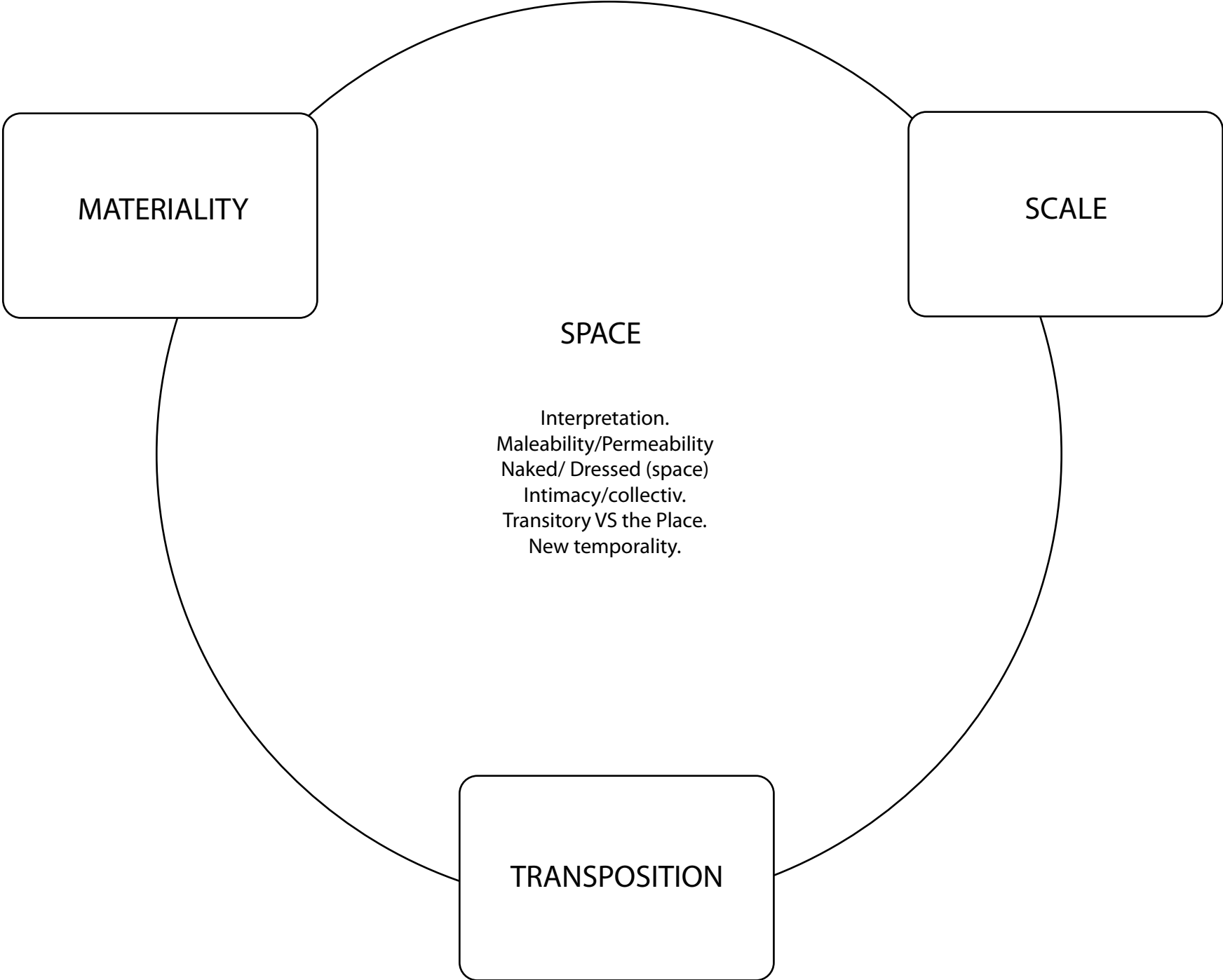
Materiality: If the materiality of the built fabric is used in mediating an economic driven, time pre-occupied culture, then what would changing the fabric result in? We believe that we have become desensitized to the built fabric, and now with technological advancements that reduce the necessity for facade as structure, we are interested in how materiality can change one's experience through public space and possibly catalyse an extension of time through the engagement with the built environment. The idea of introducing soft elements that provide a greater tactile experience to surface, and the (perhaps only theoretical) exploration of possible surfaces that have the potential to have a very different relation to the public.

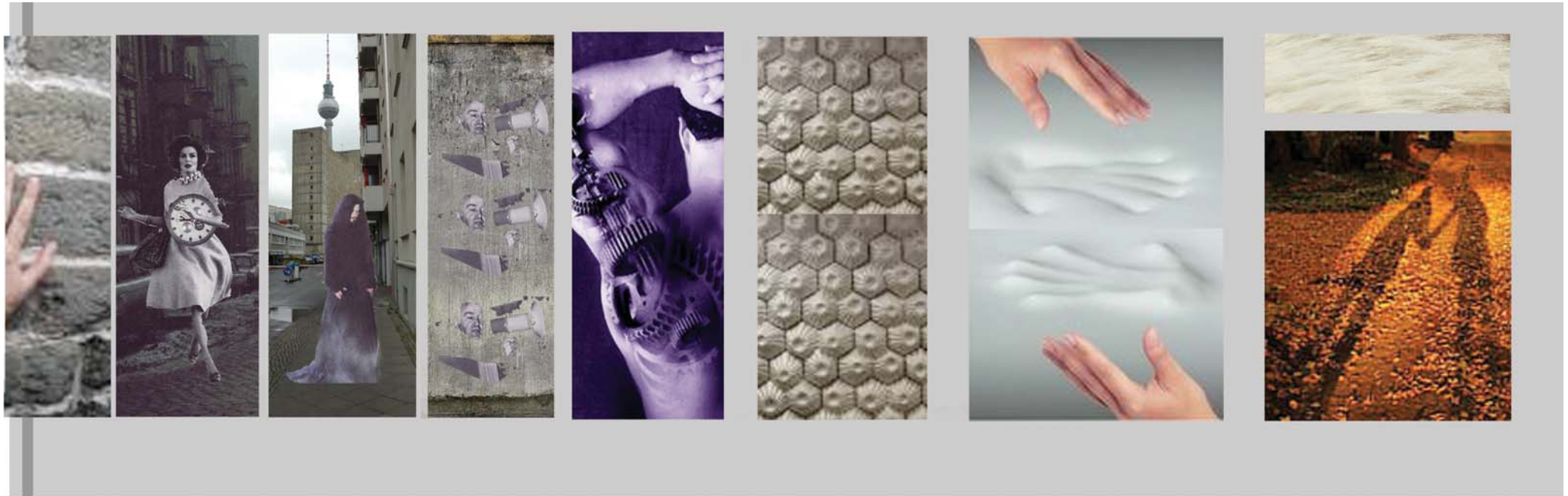
Transposition: The territories of public and private are deeply entrenched and reinforced via the placement of objects. Be it through the placement of material, or other artefacts, things are only understood to be normal and acceptable in their pre-determined context. By decontextualising everyday items, we want to expose the boundaries between the intimate and the confined, the mass and the detail, and try to introduce a sense of the poetic to the space in order to slow down the thoroughfare nature of the platz.

Scale: We want to experiment with scale, and create moments that engage one with everyday objects by presenting them at non-conventional scales. The aim is to stimulate an experience whereby one perceives their relationship between the surrounding space and the objects in a different way. The small elements of the site could be seen as the most poetic, we want to look the scale in terms of size but also in terms of its frequency which work to denormalise the collective idea of what is public space.

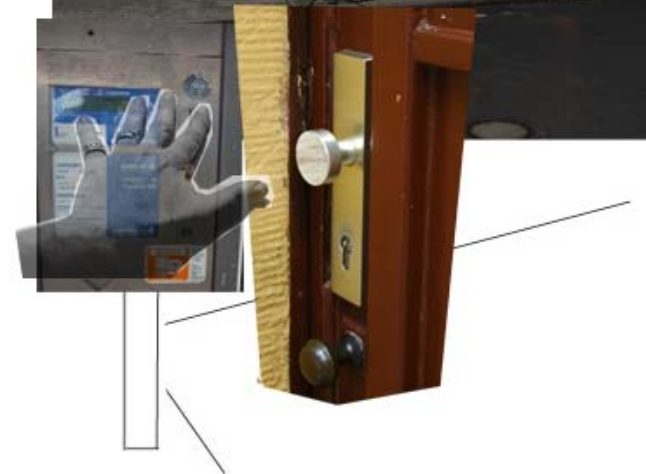
ANALYSE

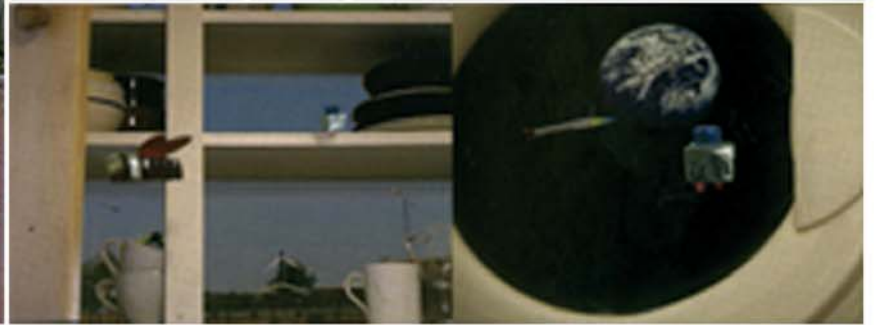






Materiality





Transposition